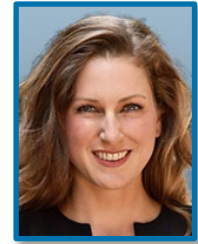




California Medical Evaluators
11620 Wilshire Blvd. Suite 340
Los Angeles, CA 90025
Phone: 888.853.7944
Fax: 213.478.0550
info@calmedeval.com



Dr. Alexis Dixon, MD *Board-Certified in Orthopaedic Surgery*

Board-certified orthopaedic surgeon, highly specialized in foot and ankle surgery.

EDUCATION

- **Baylor University Medical Center**, Dallas, TX (2016)
Fellowship, Foot and Ankle Surgery
- **University of Southern California, Los Angeles County Medical Center**, Los Angeles, CA (2015)
Residency, Orthopaedic Surgery
- **University of Southern California Keck School of Medicine**, Los Angeles, CA (2010)
Doctor of Medicine, MD with Highest Distinction
- **Pomona College**, Claremont, CA (2004)
Bachelor of Arts, Spanish Literature

PROFESSIONAL EXPERIENCE

- **DISC Sports & Spine Center**, Marina Del Rey, CA – Orthopaedic Foot & Angle Surgeon (2016)

LICENSURE AND CERTIFICATION

- American Board of Orthopaedic Surgeons
- California Medical License
- California Fluoroscopy Supervisor's Permit
- DEA, California

PROFESSIONAL MEMBERSHIPS

- American Orthopaedic Foot and Ankle Society (2014-present)
- American Academy of Orthopaedic Surgeons (2010-present)

- Alpha Omega Alpha, Honor Medical Society (2009-present)

HONORS AND AWARDS

- Valedictorian, Keck School of Medicine (Class of 2010)
- Alpha Omega Alpha Medical Honor Society, Inductee and Chapter President (2009)
- AMA Outstanding Student Award (2010)
- AMA Research Award (2010)
- AMA Clinical Award (2010)
- AMWA Glasgow-Rubin Commendation (2010)
- Jeanette Wilkins, MD Award for Orthopaedics (2010)
- Weiler Foundation Scholarship (2009, 2010)
- ARCS Foundation Scholar Award, Scholarship for Research (2009)
- Walker Foundation Scholarship (2009)
- Dean's Recognition (2008 & 2009)
- Pathology Award (2007 & 2008)
- Keck School of Medicine Student Research Forum, Honorable Mention (2008)
- Bing Scholarship (2007)
- Baxter Fellowship for Student Research (2007)
- SEBM Young Investigator Award, 2nd Place (2005)

LANGUAGES

- Spanish (fluent, spoken and written)

LEADERSHIP

- Graduate Medical Education Committee Member, LAC+USC (2012-2015)
- President, Alpha Omega Alpha Honor Society, USC (2009-2010)
- Student Government, Secretary (2007-2010)
- Lecturer, COPE Health Solutions (2007-2008)
- Academic Procedures Committee Member, Pomona College (2003-2004)

RESEARCH & PUBLICATIONS

Peer-reviewed articles:

Dixon A, Lee L, Charlton T, Thordarson D. "Increased incidence and severity of post-operative radiographic hallux valgus interphalangeus with surgical correction of hallux valgus." *Foot and Ankle International* 36(8)961-8, 2015.

Gabet Y, Baniwal SK, Leclerc N, Shi Y, Kohn-Gabet AE, Cogan J, **Dixon A**, Bachar M, Guo L, Jurman JE, Frenkel B. Krox20/EGR2 deficiency accelerates cell growth and differentiation in the monocytic lineage and decreases bone mass. *Blood*, 116(19)3964-71, 2010.

Noh T, Gabet Y, Cogan J, Tank A, Sasaki T, Criswell B, **Dixon A**, Lee C, Tam J, Kohler T, Segev E, Kockeritz L, Woodgett J, Muller R, Chai Y, Smith E, Bab I, Frenkel B. Lef1 haploinsufficient mice display a low turnover and low bone mass phenotype in a gender- and age-specific manner. *PLoS ONE*, 4(5)e5438, 2009.

Gabet Y, Noh T, Cogan J, Tank A, Sasaki T, Criswell B, **Dixon A**, Tam J, Kohler T, Regev E, Kockeritz L, Woodgett J, Muller R, Chai Y, Smith E, Bab I, Frenkel B. Gender-specific control of peak bone mass by the Wnt pathway: Androgen signaling protects against LEF1 haploinsufficiency-induced bone loss. *Bone*, 42(2)S50, 2008.

Dixon A, Wells CC, Singh S, Babayan R, Maric C. Renoprotective effects of a selective estrogen receptor modulator raloxifene in an animal model of diabetic nephropathy. *Am J of Nephrology* 27: 120-128, 2007.

Dixon A, Maric C. 17 β -estradiol attenuates diabetic kidney disease via regulating extracellular matrix and transforming growth factor-beta protein expression and signaling. *Am J of Phys— Renal Physiology* 293(5):F1678-90, 2007.

Meeting Presentations & Posters:

Dixon AE, Myer D, Elkins J, Brodsky JW. Male hallux valgus corrected by translational osteotomy of the first metatarsal. *American Orthopaedic Foot and Ankle Society Annual Meeting*, 2016.

Dixon AE, Lee LC, Charlton TP, Thordarson DB. Increased incidence and severity of radiographic hallux valgus interphalangeus with surgical correction of hallux valgus. *University of Southern California Graduate Orthopaedic Society Meeting*, 2015.

Dixon AE, Lee LC, Kikuchi C, Charlton TP, Thordarson DB. Radiographic Hallux Valgus Interphalangeus Worsens With Surgical Correction Of Hallux Valgus. *AAOS Academy Meeting*, 2015.

Gabet Y, Noh T, Cogan J, Tank A, Sasaki T, Criswell B, **Dixon A**, Tam J, Kohler T, Segev E, Kockeritz L, Woodgett J, Muller R, Chai Y, Smith E, Bab I, Frenkel B.

Crosstalk between androgen receptor & Wnt signaling mediates sexual dimorphism during bone mass accrual. *Am Soc Bone & Mineral Research*, 2008.

Gabet Y, Noh T, Cogan J, Tank A, Sasaki T, Criswell B, **Dixon A**, Tam J, Kohler T, Segev E, Kockeritz L, Woodgett J, Muller R, Chai Y, Smith E, Bab I, Frenkel B. Gender-specific control of peak bone mass by the Wnt Pathway: Androgen signaling protects against Lef1 haploinsufficiency-induced bone loss. *European Calcified Tissue Society*, 2008.

Gabet Y, Noh T, Cogan J, Tank A, Sasaki T, Criswell B, **Dixon A**, Tam J, Kohler T, Segev E, Kockeritz L, Woodgett J, Muller R, Chai Y, Smith E, Bab I, Frenkel B. Gender-specific control of peak bone mass by the Wnt Pathway: Androgen signaling protects against Lef1 haploinsufficiency-induced bone loss. *European Calcified Tissue Society*, 2008. *International Bone and Mineral Society*, 2008.

Gabet Y, Noh T, Cogan J, Tank A, Sasaki T, Criswell B, **Dixon A**, Tam J, Kohler T, Segev E, Kockeritz L, Woodgett J, Muller R, Chai Y, Smith E, Bab I, Frenkel B. Gender-specific control of peak bone mass by the Wnt Pathway: Androgen signaling protects against Lef1 haploinsufficiency-induced bone loss. *European Calcified Tissue Society*, 2008. *Medical Student Research Forum, Keck School of Medicine*, 2008.

Maric C, **Dixon A**, Garman JH. Renoprotective effects of 17 β -estradiol in diabetic nephropathy. *European Diabetic Nephropathy Study Group*, 2006.

Garman JH, **Dixon A**, Maric C. Protective effects of omega-3 fatty acids in an animal model of diabetic nephropathy. *Society for Experimental Biology and Medicine, DC Chapter, Student Research Symposium*, 2006.

Dixon A, Babayan R, Singh S, Maric C. Renoprotective effects of raloxifene in diabetic nephropathy. *60th Annual Meeting of the High Blood Pressure Research Council*, 2006.

Dixon A, Maric C. 17 β -estradiol reverses the decline in renal function associated with diabetic nephropathy. *60th Annual Meeting of the High Blood Pressure Research Council*, 2006.

Garman JH, **Dixon A**, Maric C. Protective effects of omega-3 fatty acids in an animal model of diabetic nephropathy. *Exp Biol* 2007.

Garman JH, **Dixon A**, Maric C. Protective effects of omega-3 fatty acids in an animal model of diabetic nephropathy. *Student Research Day, Georgetown University*, 2007.

Book Chapters:

Dixon A, Lorenzana D, Thordarson D, Charlton T. "Navicular Fractures," *Sports injuries of the foot: Evolving treatment and management*, Philbin T. Springer, 2014.